

FOR NOTES, REFERENCES AND LEGEND SEE SHEET C-101.

BEALS AND THOMAS, INC. SHALL NOT BE RESPONSIBLE FOR CONSTRUCTION MEANS, METHODS, TECHNIQUES, OR PROCEDURES UTILIZED BY THE CONTRACTOR, NOR FOR THE SAFETY OF PUBLIC OR CONTRACTOR'S EMPLOYEES, OR FOR THE FAILURE OF THE CONTRACTOR TO CARRY OUT THE WORK IN ACCORDANCE WITH THE CONTRACT DOCUMENTS.

NO PART OF THIS DOCUMENT MAY BE REPRODUCED, STORED IN A RETRIEVAL SYSTEM, OR TRANSMITTED IN ANY FORM OR BY ANY MEANS, ELECTRONIC, MECHANICAL, PHOTOCOPYING, RECORDING OR OTHERWISE WITHOUT THE PRIOR WRITTEN PERMISSION OF BEALS AND THOMAS, INC. EXCEPT THAT ANY REGULATORY AUTHORITY MAY REPRODUCE AND TRANSMIT COPIES AS REQUIRED IN CONJUNCTION WITH PERFORMANCE OF OFFICIAL BUSINESS UNDER ITS JURISDICTION. ANY MODIFICATIONS TO THIS DOCUMENT MUST HAVE THE WRITTEN PERMISSION OF BEALS AND THOMAS, INC. SHALL REMAIN THE PROPERTY OF BEALS AND THOMAS, INC.

Silt Fence Installed

Additional Silt fence and Straw bales installed

NOTE: WICK DRAIN VALVES TO REMAIN CLOSED UNLESS WATER LEVEL IN BASINS NEEDS TO BE LOWERED FOR MAINTENANCE.

CRITICAL STORMWATER CONTROL AREA (SEE NOTE)

CRITICAL STORMWATER CONTROL AREA (SEE NOTE)

CRITICAL STORMWATER CONTROL AREA (SEE NOTE)

CRITICAL STORMWATER CONTROL AREA (SEE NOTE)

CRITICAL STORMWATER CONTROL AREA (SEE NOTE)

CRITICAL STORMWATER CONTROL AREA (SEE NOTE)

CRITICAL STORMWATER CONTROL AREA (SEE NOTE)

CRITICAL STORMWATER CONTROL AREA (SEE NOTE)

CRITICAL STORMWATER CONTROL AREA (SEE NOTE)

CRITICAL STORMWATER CONTROL AREA (SEE NOTE)

CRITICAL STORMWATER CONTROL AREA (SEE NOTE)

CRITICAL STORMWATER CONTROL AREA (SEE NOTE)

CRITICAL STORMWATER CONTROL AREA (SEE NOTE)

CRITICAL STORMWATER CONTROL AREA (SEE NOTE)

CRITICAL STORMWATER CONTROL AREA (SEE NOTE)

CRITICAL STORMWATER CONTROL AREA (SEE NOTE)

CRITICAL STORMWATER CONTROL AREA (SEE NOTE)

CRITICAL STORMWATER CONTROL AREA (SEE NOTE)

CRITICAL STORMWATER CONTROL AREA (SEE NOTE)

CRITICAL STORMWATER CONTROL AREA (SEE NOTE)

CRITICAL STORMWATER CONTROL AREA (SEE NOTE)

CRITICAL STORMWATER CONTROL AREA (SEE NOTE)

CRITICAL STORMWATER CONTROL AREA (SEE NOTE)

CRITICAL STORMWATER CONTROL AREA (SEE NOTE)

CRITICAL STORMWATER CONTROL AREA (SEE NOTE)

CRITICAL STORMWATER CONTROL AREA (SEE NOTE)

CRITICAL STORMWATER CONTROL AREA (SEE NOTE)

CRITICAL STORMWATER CONTROL AREA (SEE NOTE)

CRITICAL STORMWATER CONTROL AREA (SEE NOTE)

CRITICAL STORMWATER CONTROL AREA (SEE NOTE)

CRITICAL STORMWATER CONTROL AREA (SEE NOTE)

CRITICAL STORMWATER CONTROL AREA (SEE NOTE)

CRITICAL STORMWATER CONTROL AREA (SEE NOTE)

CRITICAL STORMWATER CONTROL AREA (SEE NOTE)

CRITICAL STORMWATER CONTROL AREA (SEE NOTE)

CRITICAL STORMWATER CONTROL AREA (SEE NOTE)

CRITICAL STORMWATER CONTROL AREA (SEE NOTE)

CRITICAL STORMWATER CONTROL AREA (SEE NOTE)

CRITICAL STORMWATER CONTROL AREA (SEE NOTE)

CRITICAL STORMWATER CONTROL AREA (SEE NOTE)

CRITICAL STORMWATER CONTROL AREA (SEE NOTE)

CRITICAL STORMWATER CONTROL AREA (SEE NOTE)

CRITICAL STORMWATER CONTROL AREA (SEE NOTE)

CRITICAL STORMWATER CONTROL AREA (SEE NOTE)

CRITICAL STORMWATER CONTROL AREA (SEE NOTE)

CRITICAL STORMWATER CONTROL AREA (SEE NOTE)

CRITICAL STORMWATER CONTROL AREA (SEE NOTE)

CRITICAL STORMWATER CONTROL AREA (SEE NOTE)

CRITICAL STORMWATER CONTROL AREA (SEE NOTE)

CRITICAL STORMWATER CONTROL AREA (SEE NOTE)

CRITICAL STORMWATER CONTROL AREA (SEE NOTE)

CRITICAL STORMWATER CONTROL AREA (SEE NOTE)

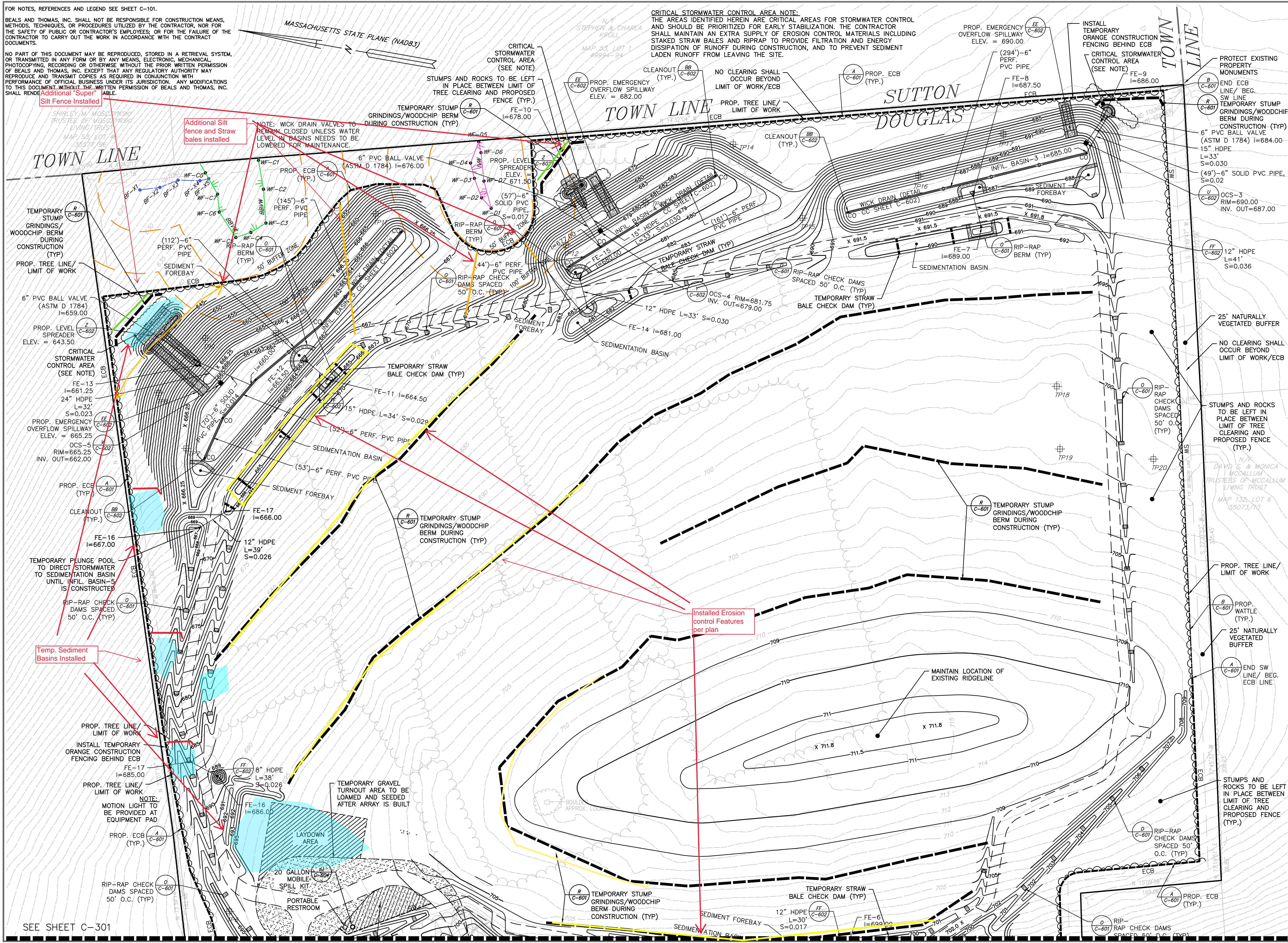
CRITICAL STORMWATER CONTROL AREA (SEE NOTE)

CRITICAL STORMWATER CONTROL AREA (SEE NOTE)

CRITICAL STORMWATER CONTROL AREA (SEE NOTE)

SEE SHEET C-301

CRITICAL STORMWATER CONTROL AREA NOTE:
THE AREAS IDENTIFIED HEREIN ARE CRITICAL AREAS FOR STORMWATER CONTROL AND SHOULD BE PRIORITIZED FOR EARLY STABILIZATION. THE CONTRACTOR SHALL MAINTAIN AN EXTRA SUPPLY OF EROSION CONTROL MATERIALS INCLUDING STAKED STRAW BALES AND RIPRAP TO PROVIDE FILTRATION AND ENERGY DISSIPATION OF RUNOFF DURING CONSTRUCTION, AND TO PREVENT SEDIMENT LADEN RUNOFF FROM LEAVING THE SITE.



PREPARED FOR:
BWC WHITIN RESERVOIR, LLC
P.O. BOX 171381
BOSTON, MA 02117

RECORD OWNERS:
SUSAN MOSCZYNSKI
MAP 132, LOT 5
L.C. PAGE 98, BOOK R2941

JEFFREY R. MURPHY
CIVIL
No. 51800
REGISTERED PROFESSIONAL ENGINEER
Jeffrey R. Murphy
6/21/23
COPYRIGHT (C) BY BEALS AND THOMAS, INC.
ALL RIGHTS RESERVED

PREPARED BY:
BEALS + THOMAS
BEALS AND THOMAS, INC.
144 Turnpike Road
Southborough, Massachusetts 01772-2104
T 508.366.0560 | www.bealsandthomas.com

ISSUE DATE	DESCRIPTION
7/06/21/2023	REVISED PER COMMENTS
6/03/28/2023	ISSUED FOR CONSTRUCTION
5/03/16/2021	FOR DATE ONLY
4/06/24/2020	REVISED PER TOWN COMMENTS
3/06/11/2020	REVISED PER TOWN COMMENTS
2/04/03/2020	REVISED GRADING
1/03/09/2020	REVISED PER TOWN COMMENTS
0/01/31/2020	FIRST ISSUE

PROJECT:
OAK STREET SOLAR
DOUGLAS, MA
(WORCESTER COUNTY)

SCALE: 1" = 50'
DATE: JANUARY 31, 2020

SITE PREP. AND EROSION CONTROL PLAN

B+T JOB NO. 3140.01
B+T PLAN NO. 314001P04G-005
C-302